

# our plan for reKnighting

## WALDRON CAMPUS CENTER

AUGUST 2020

There are two significant changes we want you to know and understand as we are about to start a new school year: The traffic flow through this building will be entirely different, and seating capacity throughout the building has been redesigned to align with “COVID capacity” guidance.

At least for the first few weeks of the fall semester, only three Waldron entrances will be open:

- The west doors near the Wright Room;
- The 6th Street doors on the north end of the building; and
- The east doors between the Hammermill Center and Old Main.

All other doors will be locked. All exits will of course function as normal.

This will direct all traffic toward our temperature check points at the north end of the main WCC concourse.



A map illustrating these new traffic patterns can be found on the page that follows and at <https://update.gannon.edu/Documents/GannonUniversity-WaldronCampusCenter-Map.pdf>.

Also, we have adjusted seating in all common areas throughout the Waldron Campus Center to be compliant with social-distancing protocols. This has significantly reduced the number of available seats in the Beyer Cafeteria. As a result, we

will be offering the 219 suite and the second floor game room as overflow seating for students with to-go meals, while Metz will provide a meal plan buffet option in the Yehl Ballroom during lunch and dinner hours.



This scheduling adjustment will significantly limit the availability of 219 and Yehl for meetings and special events during the fall semester.

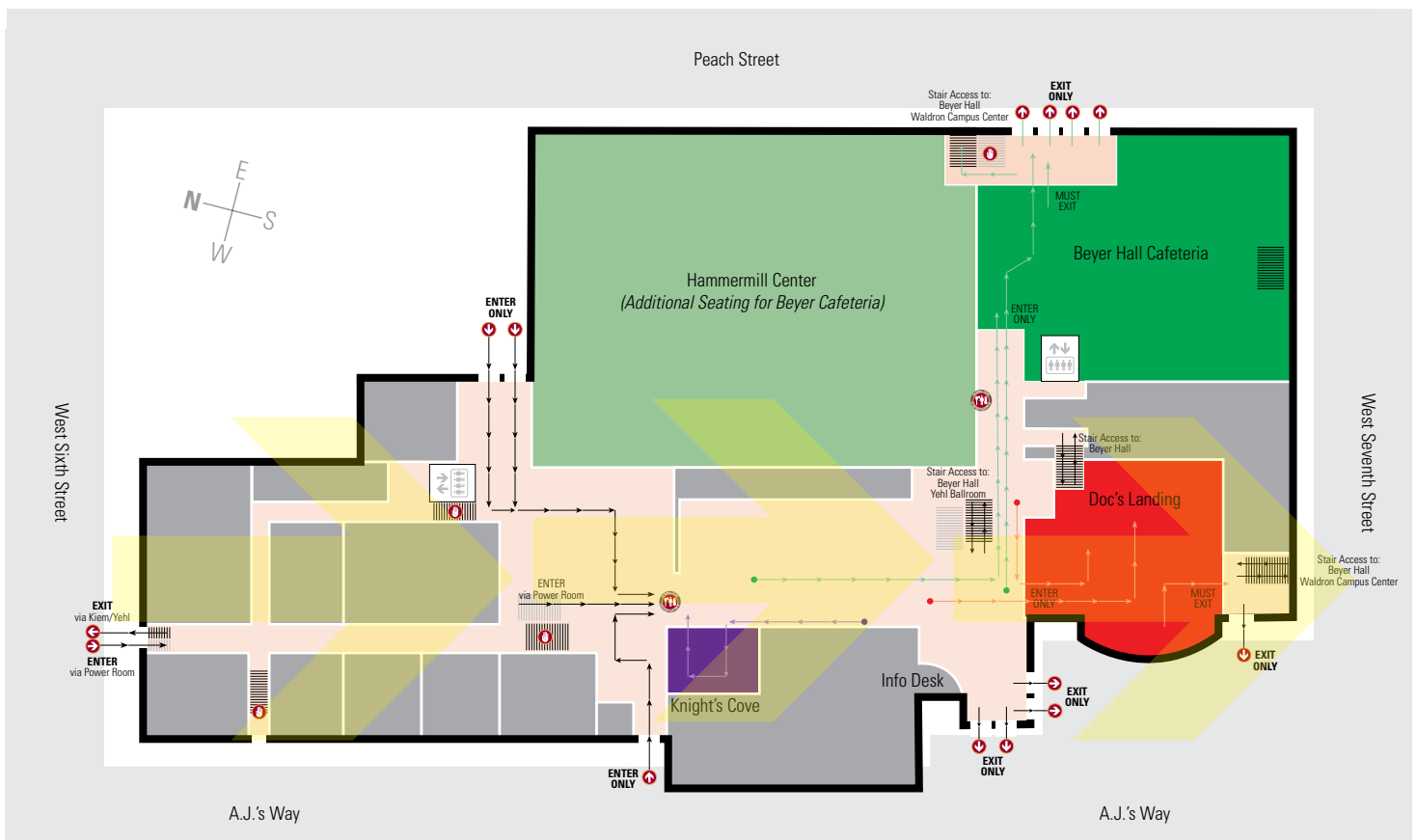
We apologize for any inconvenience this causes and ask for your patience as we work toward accommodating the needs of our students during mealtimes and beyond.

As we remain steadfast in our commitment to our students and to healthy social-distancing practices, we encourage you to please utilize remote conferencing platforms like Zoom as much as possible for meetings and events throughout the fall semester 2020.

For your convenience, we have created a document with diagrams of approved COVID-19 socially distanced setups for Waldron Campus Center spaces, with explanations of available technologies for each. To view the document, please click here: <https://my.gannon.edu/campuslife/waldron/Pages/roomdimensions.aspx>



## WALDRON CAMPUS CENTER Traffic Flows North to South



### DINE-IN

- Beyer Hall Cafeteria

### TO-GO

- Knight's Cove
- Doc's Landing
- Beyer Hall Cafeteria

### SEATING AREAS

- Hammermill Center (for Beyer Cafeteria)
- Club LaRiccia (for Beyer Cafeteria, Lower Level)
- Waldron Lounge (Second Floor)
- Waldron 219 (Second Floor)
- Yehl Alumni Ballroom (Second Floor)

<https://update.gannon.edu/Documents/GannonUniversity-WaldronCampusCenter-Map.pdf>